

A121 Residual current circuit breaker FDL16

Breaking Capacity: H: 10000A; N: 6000A; L: 4500A

10000A

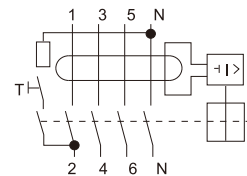
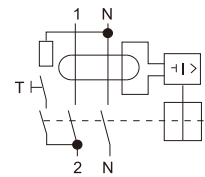


Rated Current	Residual Current	AC type / Order Code		A type / Order Code	
		2P	4P	2P	4P
25A	10mA	L16-2C-2510	L16-4C-2510	L16-2A-2510	L16-4A-2510
	30mA	L16-2C-2530	L16-4C-2530	L16-2A-2530	L16-4A-2530
	100mA	L16-2C-25100	L16-4C-25100	L16-2A-25100	L16-4A-25100
	300mA	L16-2C-25300	L16-4C-25300	L16-2A-25300	L16-4A-25300
40A	10mA	L16-2C-4010	L16-4C-4010	L16-2A-4010	L16-4A-4010
	30mA	L16-2C-4030	L16-4C-4030	L16-2A-4030	L16-4A-4030
	100mA	L16-2C-40100	L16-4C-40100	L16-2A-40100	L16-4A-40100
	300mA	L16-2C-40300	L16-4C-40300	L16-2A-40300	L16-4A-40300
63A	10mA	L16-2C-6310	L16-4C-6310	L16-2A-6310	L16-4A-6310
	30mA	L16-2C-6330	L16-4C-6330	L16-2A-6330	L16-4A-6330
	100mA	L16-2C-63100	L16-4C-63100	L16-2A-63100	L16-4A-63100
	300mA	L16-2C-63300	L16-4C-63300	L16-2A-63300	L16-4A-63300

Construction and Feature

- ◆ Provides protection against earth fault/leakage current and function of isolation
- ◆ High current rating up to 100A
- ◆ Applicable to terminal and pin/fork type busbar connection
- ◆ Contact position indication
- ◆ Fire resistant plastic parts endures abnormal heating and strong impact
- ◆ Automatically disconnect the circuit when earth fault/leakage current occurs and exceeds the rated sensitivity.
- ◆ Independent of power supply and line voltage and free from external interference, voltage fluctuation.

Wiring Diagram



Technical Data

- ◆ Mode: electro-magnetic type
- ◆ Residual current characteristics: AC
- ◆ Pole No.: 2, 4
- ◆ Rated making and breaking capacity: 10000A
- ◆ Rated voltage: 230/400V AC
- ◆ Rated frequency: 50/60Hz
- ◆ Rated Current: 25,40,63A
- ◆ Rated residual operating current $I_{\Delta n}$ (mA): 10, 30, 100, 300, 500
- ◆ Rated residual non operating current $I_{\Delta no}$: $0.5I_{\Delta n}$
- ◆ Rated conditional short-circuit current I_{nc} : 3000A
- ◆ Rated conditional residual short-circuit Current $I_{\Delta c}$: 3000A
- ◆ Tripping duration: instantaneous tripping $\leq 0.1s$
- ◆ Residual tripping current range: $0.5I_{\Delta n} \sim I_{\Delta n}$
- ◆ Electro-mechanical endurance: 4000 cycles
- ◆ Connection capacity: Rigid conductor 25mm²
- ◆ Connection terminal:
 - ◇ Pillar terminal with clamp
 - ◆ Fastening torque: 2.5Nm
 - ◆ Installation:
 - ◇ On symmetrical DIN rail 35mm
 - ◇ Panel mounting

RESIDUAL CURRENT CIRCUIT BREAKER



A121 Residual current circuit breaker FDL16

Breaking Capacity: H: 10000A; N: 6000A; L: 4500A

10000A

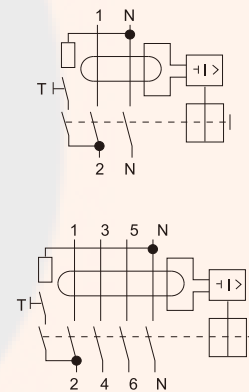


Rated Current	Residual Current	AC type / Order Code		A type / Order Code	
		2P	4P	2P	4P
63A	10mA	L16-2CH-6310	L16-4CH-6310	L16-2AH-6310	L16-4AH-6310
	30mA	L16-2CH-6330	L16-4CH-6330	L16-2AH-6330	L16-4AH-6330
	100mA	L16-2CH-63100	L16-4CH-63100	L16-2AH2-63100	L16-4AH-63100
	300mA	L16-2CH-63300	L16-4CH-63300	L16-2AH-63300	L16-4AH-63300
80A	10mA	L16-2CH-8010	L16-4CH-8010	L16-2AH-8010	L16-4AH-8010
	30mA	L16-2CH-8030	L16-4CH-8030	L16-2AH-8030	L16-4AH-8030
	100mA	L16-2CH-80100	L16-4CH-80100	L16-2AH-80100	L16-4AH-80100
	300mA	L16-2CH-80300	L16-4CH-80300	L16-2AH-80300	L16-4AH-80300
100A	10mA	L16-2CH-10010	L16-4CH-10010	L16-2AH-10010	L16-4AH-10010
	30mA	L16-2CH-10030	L16-4CH-10030	L16-2AH-10030	L16-4AH-10030
	100mA	L16-2CH-100100	L16-4CH-100100	L16-2AH-100100	L16-4AH-100100
	300mA	L16-2CH-100300	L16-4CH-100300	L16-2AH-100300	L16-4AH-100300

Construction and Feature

- ◆ Provides protection against earth fault/leakage current and function of isolation
- ◆ High current rating up to 100A
- ◆ Applicable to terminal and pin/fork type busbar connection
- ◆ Contact position indication
- ◆ Fire resistant plastic parts endures abnormal heating and strong impact
- ◆ Automatically disconnect the circuit when earth fault/leakage current occurs and exceeds the rated sensitivity.
- ◆ Independent of power supply and line voltage and free from external interference, voltage fluctuation.

Wiring Diagram



Technical Data

- ◆ Mode: electro-magnetic type
- ◆ Residual current characteristics: AC
- ◆ Pole No.: 2, 4
- ◆ Rated making and breaking capacity: 10000A
- ◆ Rated voltage: 230/400V AC
- ◆ Rated frequency: 50/60Hz
- ◆ Rated Current: 63,80,100A
- ◆ Rated residual operating current $I_{\Delta n}$ (mA): 10, 30, 100, 300, 500
- ◆ Rated residual non operating current I_{Δ} no: $0.5I_{\Delta n}$
- ◆ Rated conditional short-circuit current I_{nc} : 10000A
- ◆ Rated conditional residual short-circuit Current $I_{\Delta c}$: 10000A
- ◆ Tripping duration: instantaneous tripping $\leq 0.1s$
- ◆ Residual tripping current range: $0.5I_{\Delta n} \sim I_{\Delta n}$
- ◆ Electro-mechanical endurance: 4000 cycles
- ◆ Connection capacity: Rigid conductor $25mm^2$
- ◆ Connection terminal:
 - ◇ Pillar terminal with clamp
- ◆ Fastening torque: 2.5Nm
- ◆ Installation:
 - ◇ On symmetrical DIN rail 35mm
 - ◇ Panel mounting